



TILCOR

roofmakers to the world



TUDOR TEXTURED FINISH

The elegance and style of Tudor

The Tilcor Tudor textured-finish tile exudes a traditional, European style reminiscent of the Tudors of a by-gone age. Its elegant and undulating form is well suited to both modern and traditional homes.

SHAKE TEXTURED FINISH

The rustic charm of traditional shake

The Tilcor Shake textured-finish tile features the wood-grain appearance of traditional shake. Its deep-ribbed profile is designed to enhance the shadow lines and create visual contrast.



ROYAL TEXTURED FINISH

The unique form of Royal

The Tilcor Royal tile features a textured finish in a shingle-type design. Unique in its form, this smart tile will add interesting dimensions and shadow lines to your roof.



100% NEW ZEALAND
MANUFACTURED

Established 1942

Two words best describes
Tilcor roofing system:
**Quality &
Durability**



Why are Tilcor stone coated steel roofing tiles the preferred option?

Proven Track Record

The Tilcor brand is a world leader in roofing products with experience in manufacturing since 1942.

Global brand with an international presence

Tilcor & its parent company have installed over 50 million square metres of roofing world-wide; equivalent to approximately 20% of the total size of Nigeria. With roofing tiles now installed in over 100 countries, the brand has become recognised as a world leader in roofing products.

New Zealand based world-class manufacturing capability

Tilcor roofing tiles are 100% manufactured at their New Zealand factory which complies with international quality standards & is ISO 9001-accredited.

Guaranteed quality & longevity

Tilcor roofing systems are backed by a 50 Year Weather-proof Warranty & 15 Year Surface Coating Warranty.

Exceptional strength & superior performance

Tilcor roof tiles are water, fire and earthquake resistant & can withstand the harshest climates including extreme heat, heavy rainfall & hurricane-force winds.

Double protection from rust and corrosion

Tilcor roofing systems are made from ZINCALUME steel - a special kind of steel coated with zinc & aluminium alloy - which is four times more resistant to corrosion than galvanised steel used in normal roofs. The combination of steel & stone coating provides double protection from rust & corrosion.

Colour does not fade

The stone granules used on Tilcor roofing tiles do not fade as they are made from natural stone sourced from quarries of New Zealand.

Sound proof from rain

The natural stone-coating of the roof tiles and empty space between the steel roofing panel and the underlayment minimizes exterior noise even in rain storm.

Environmentally friendly

Tilcor is committed to being an environmentally responsible manufacturer. All Tilcor products are produced from the world's most recycled material - steel. In addition, Tilcor roofing systems are energy efficient & suitable for rain water harvesting.



TUDOR TEXTURED FINISH

The elegance and style of Tudor



Colour options →



Burgundy



Greenstone



Terracotta



Charcoal



Olive



Brown Bark



Cedar



Lisbon



Coffee Brown



Slate



Sunset

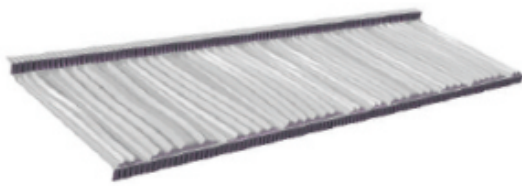


Midnight Blue

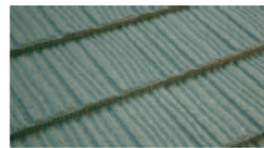


SHAKE TEXTURED FINISH

The rustic charm of traditional shake



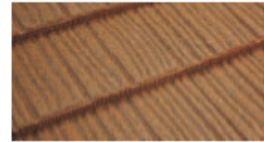
Colour options →



Greenstone



Coffee Brown



Brown Bark



Cedar



Beechwood



Ashwood



Forest



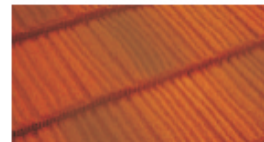
Mesquite



Charcoal



Walnut



Ember

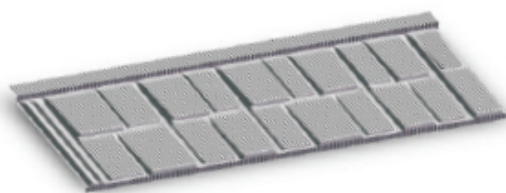


Weathered Timber



ROYAL TEXTURED FINISH

The unique form of Royal



Colour options →



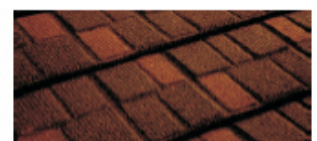
Charcoal



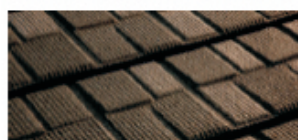
Walnut



Forest



Copper Brown

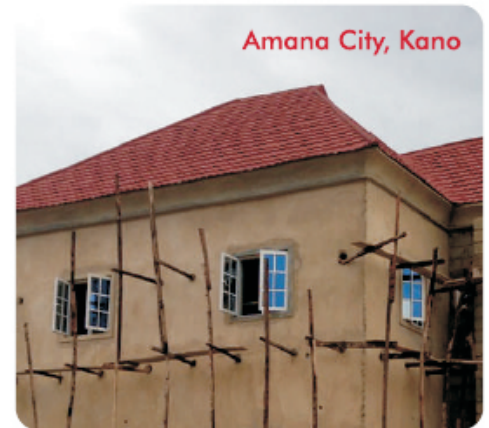


Mesquite



Weathered Timber

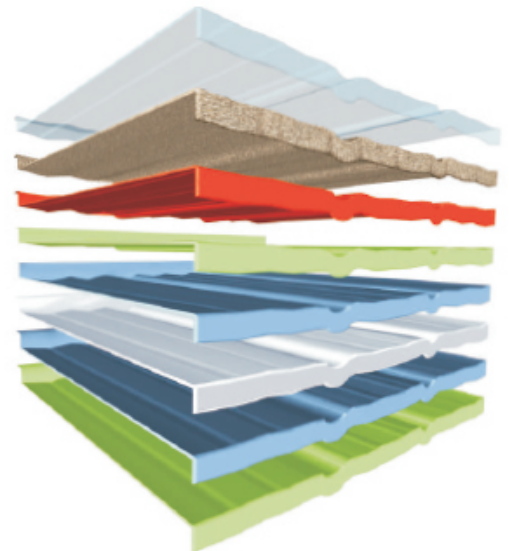
Our products
being used in
different parts
of the country



SPECIFICATIONS

LENGTH OF COVER	1265mm
WIDTH OF COVER	368mm
TILES / m ²	2.15 / m ²
WEIGHT / m ²	6.4 KGS
MINIMUM ROOF PITCH	15 DEGREES

ACRYLIC OVERGLAZE
NATURAL STONE CHIP
ACRYLIC BASE COAT
PRIMER
ZINCALUME
BASE STEEL
ZINCALUME
PRIMER



EXCLUSIVE PARTNER FOR NIGERIA



* Warranties may vary depending on climatic conditions.